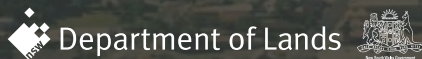


# NSW Spatial Information eXchange (SIX)

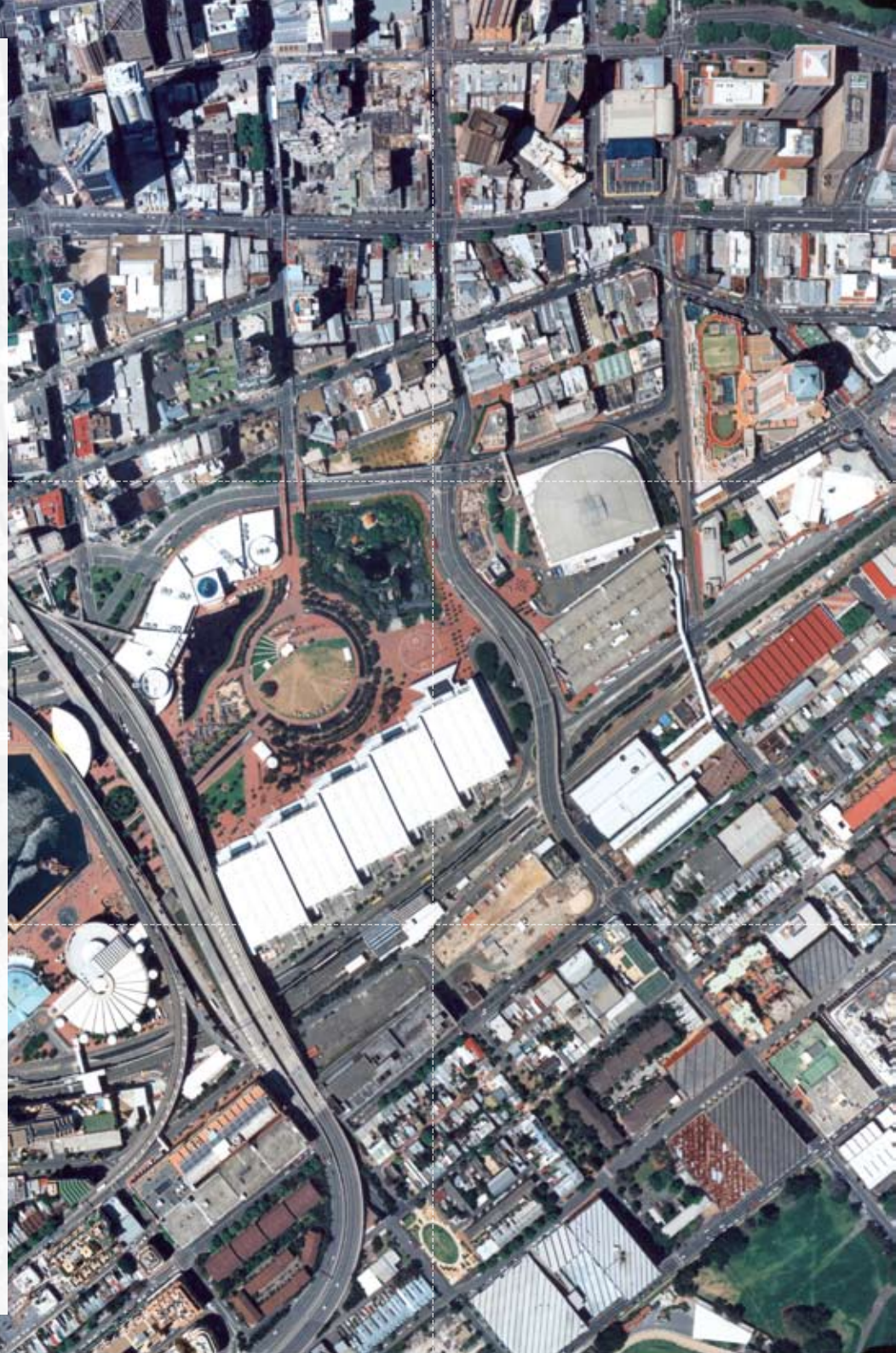


[www.six.nsw.gov.au](http://www.six.nsw.gov.au)



SIX opens up access to government spatial information to better inform and empower the general public, business communities and government agencies with information to support local decision making.

Everyone can access SIX's People First, Public Image Viewer. This is a free Internet service that provides access to the latest government spatial information.



## What is SIX?

The Spatial Information eXchange (SIX) is a web-based application, accessible via [www.six.nsw.gov.au](http://www.six.nsw.gov.au), that provides a range of spatial services and products such as high resolution imagery and geographic information across NSW.

Established by the NSW Department of Lands for use by government, business and the community, SIX can:

- search and discover spatial (location-based) information with options to search and display related data using specialised viewers or through direct web access
- provide up-to-date government information including addresses, land ownership, topography, maps and high resolution imagery
- provide secure access to spatial information, government registers and land and property related searches
- join up disparate spatial data sources to NSW spatial data infrastructure.

SIX brings to life the NSW Government's State Plan by responding to the opportunity to build a strong whole-of-government spatial services model.

## The benefits of SIX

SIX's benefits include:

- improved information access for agencies, business and the general public
- improved government processes
- better socio-economic outcomes through:
  - enhanced sharing and integration of spatial information and services across government, industry and the community
  - improved quality of decision-making and streamlined reaction times
  - improved management of community-supplied information
  - reduced government administrative effort and resources
  - improvements in data integrity, by accessing data directly
  - improved communication with the public and easier access for citizens to participate in government decision-making
  - increased inter-agency, agency to business and business-to-business collaboration.

## Key information available

- Best available mosaic of imagery across every parcel in NSW.
- Property information such as street addresses and property.
- Points of interest around NSW.
- Roads, suburbs, localities, local government areas and electoral boundaries.
- Current and historical topographic maps.
- High resolution satellite imagery.
- High resolution aerial photography over Greater Sydney and Bathurst.
- Historical aerial photography over Sydney suburbs.
- High resolution Sydways street directory for the Sydney region.
- Weather information from the Bureau of Meteorology.
- Bush fire hot spot information from Geoscience Australia.
- State Forest maps for conservation hunters.

# People First, Public Image Viewer

By using People First, Public Image Viewer you can:

- type in a suburb or address to retrieve property information
- view a street directory
- access the latest storm and bush fire information
- view the latest state-wide mosaic of satellite imagery and high resolution aerial photography over built-up areas
- access valuable geographic information for education purposes
- identify points and places of interest
- locate local transport and government services
- combine text, images and parametric data in simple window.

While the service requires broadband speeds (at least 512Kb) to be effective, without SIX it would require a large amount of localised storage and sophisticated GIS computer systems to achieve the same result.

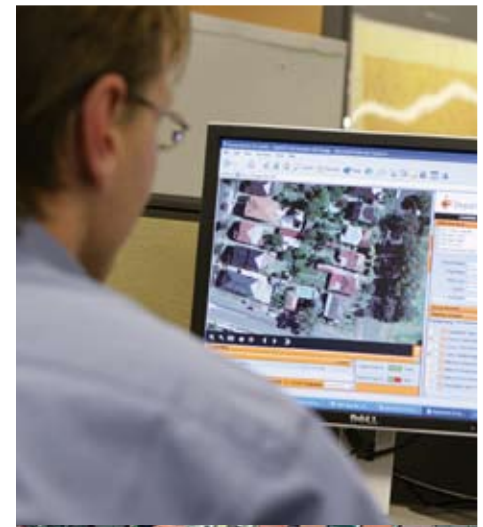


## Government service channels

SIX has dedicated service channels designed exclusively for key government services. To find out how SIX can assist your government agency contact [lands@lands.nsw.gov.au](mailto:lands@lands.nsw.gov.au).

Through improvements in data integrity and increased interagency collaboration, SIX can:

- reduced government administrative effort
- produce efficient use of resources
- provide greater responsiveness in spatial-related process
- promote a competitive economy
- reduce paperwork between agencies
- streamline government services
- reduce transaction times
- remove barriers to find and access spatial data.



## SIX's successes

- The Fire and Hazard channel helps protect communities by enabling fire brigades to more efficiently respond and manage major incidents. It provides layers of information such as the location of hydrants and water mains, emergency services facilities, details about previous incidents and live weather and fire data. These can be superimposed on the aerial and satellite photos and maps SIX provides.
- The Railways channel provides Railcorp and emergency services with up-to-date information on rail assets to help maintain an effective transport system and manage metropolitan and regional incidents.
- A dedicated spatial information channel for the NSW Department of Planning has enabled improvements in the land development process.
- The Game Council NSW uses SIX to provide conservation hunters with access to state-of-the-art maps, aerial photos and satellite imagery.

